



Company : Beach Petroleum Ltd

Well : Fermat-1

Interval : 887.00 - 2153.04 meters

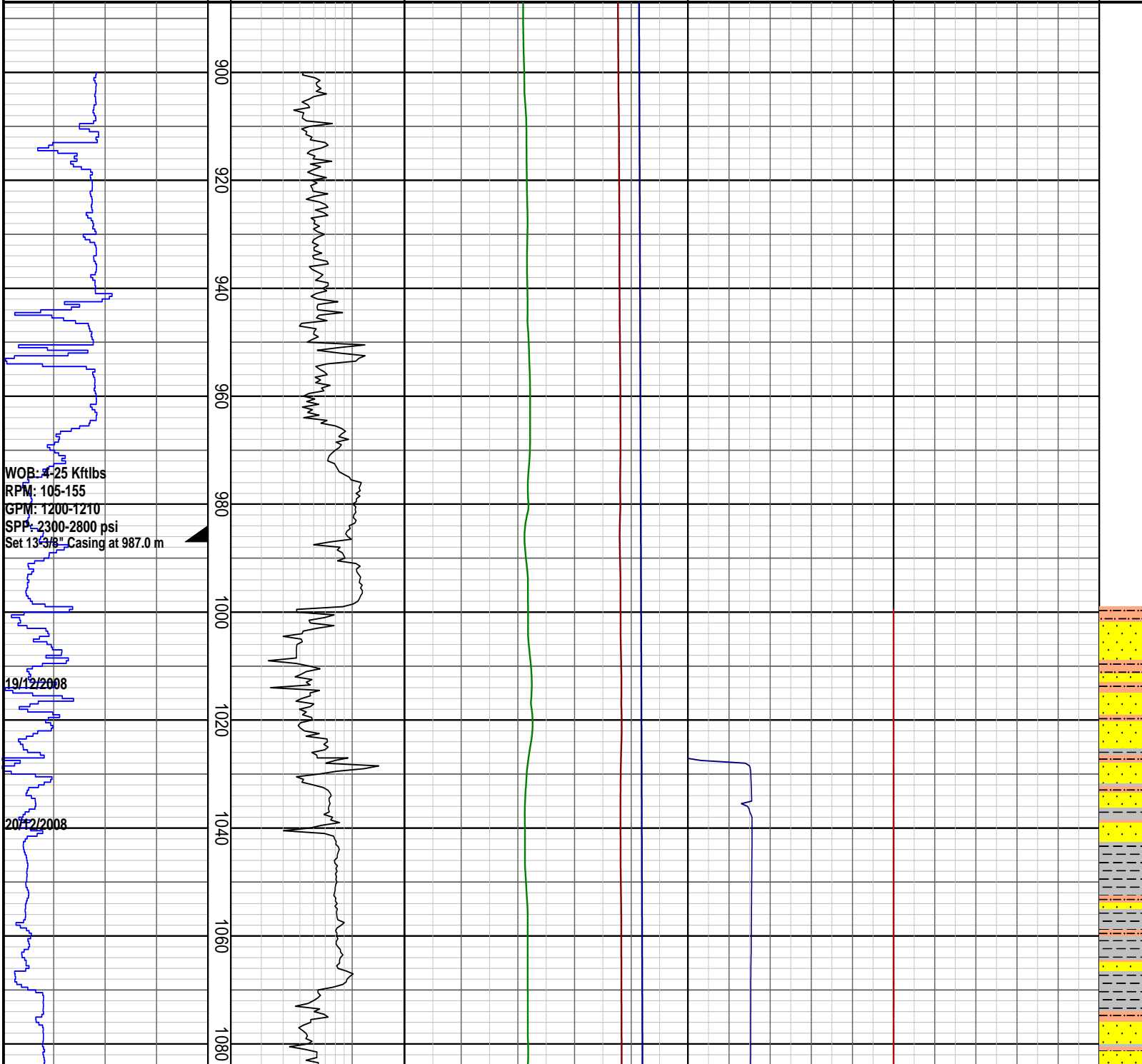
Created : 24/Dec/2008 5:34:27 AM



INTEQ

### PRESSURE DATA PLOT

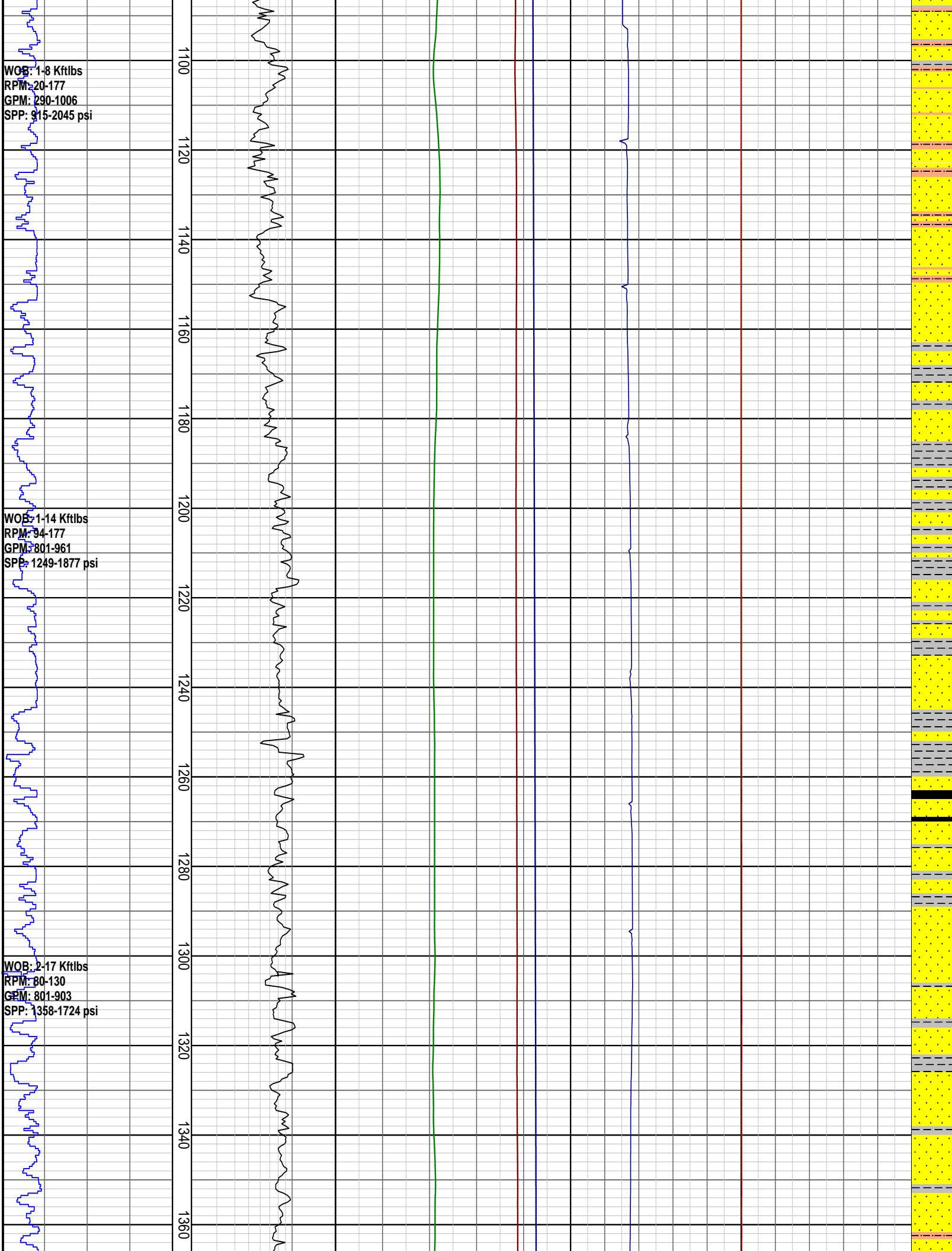
Rate of Penetration ROP	DRILLING EXPONENT DXC	PRESSURE DATA Pore Pressure	TEMPERATURE Temperature Out	GAS Total Gas	INTERPRETED LITHOLOGY
50   100   150   200 m/hr	0.2   2	4   8   12   16   20 ppg	20   40   60   80   100 degC	10   20   30   40   50 unit	
		Fracture Pressure 4   8   12   16   20 ppg			
		Overburden Gradient 4   8   12   16   20 ppg			

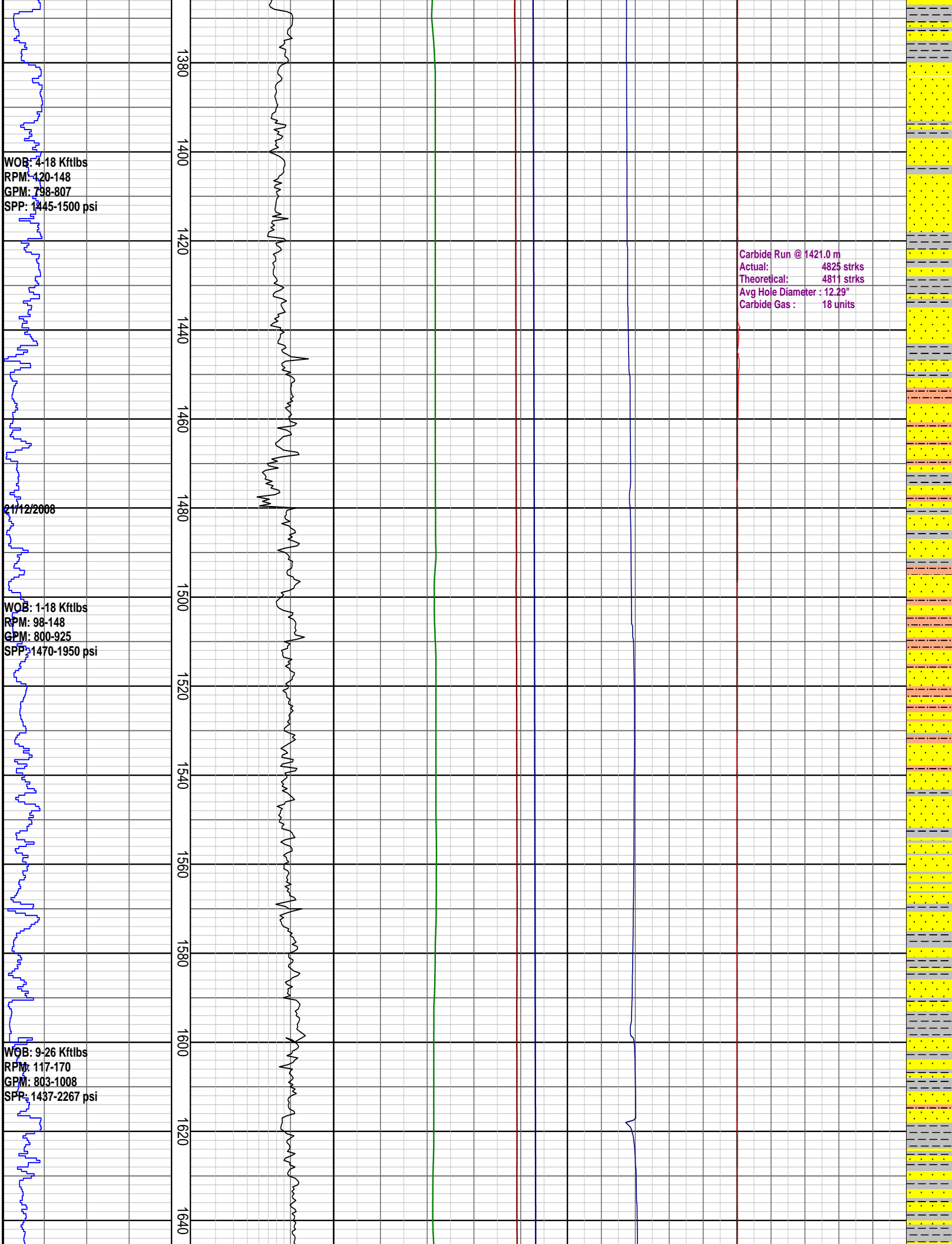


WOB: 4-25 Kftlbs  
 RPM: 105-155  
 GPM: 1200-1210  
 SPP: 2300-2800 psi  
 Set 13-3/8" Casing at 987.0 m

19/12/2008

20/12/2008





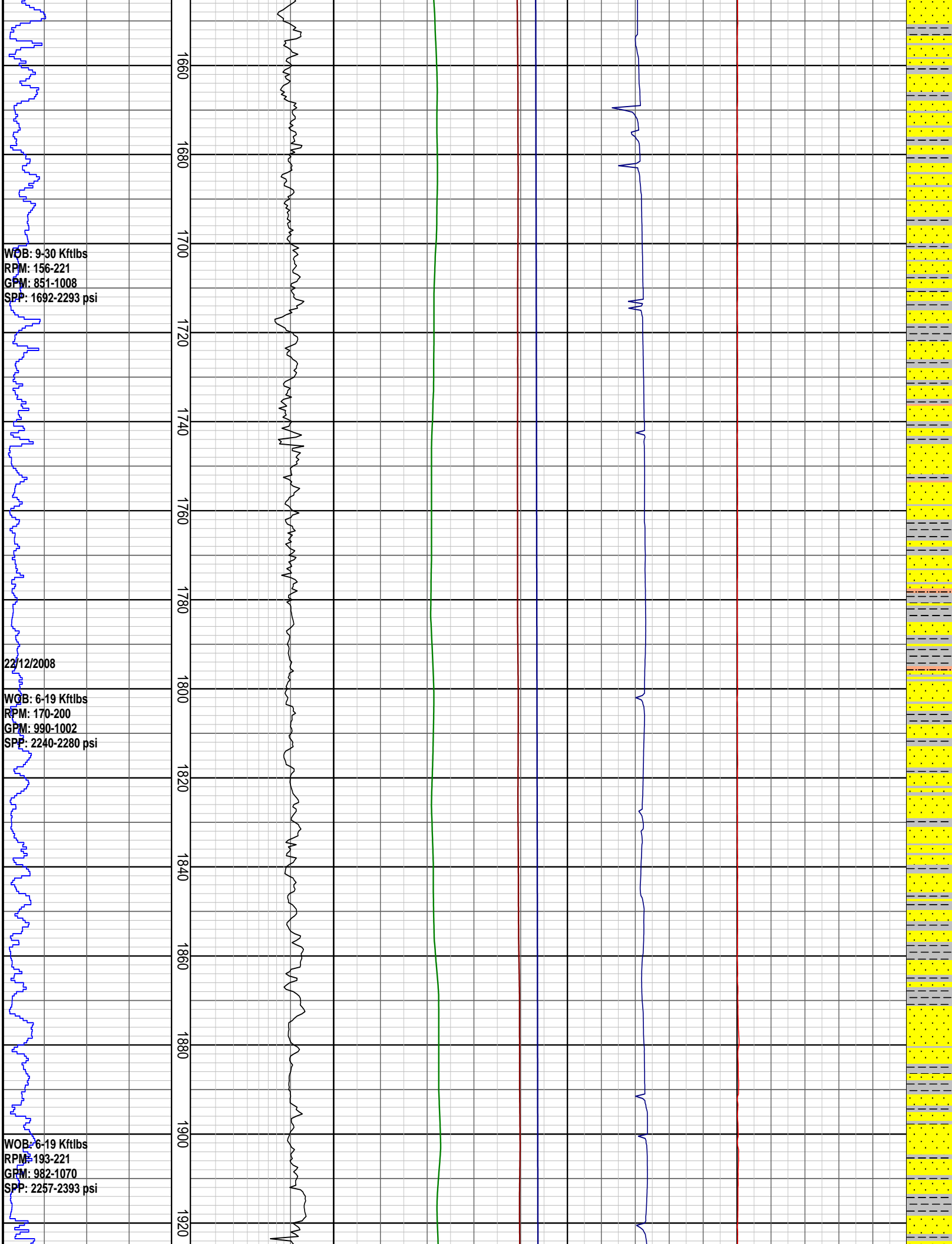
WOB: 4-18 Kftlbs  
RPM: 120-148  
GPM: 798-807  
SPP: 1445-1500 psi

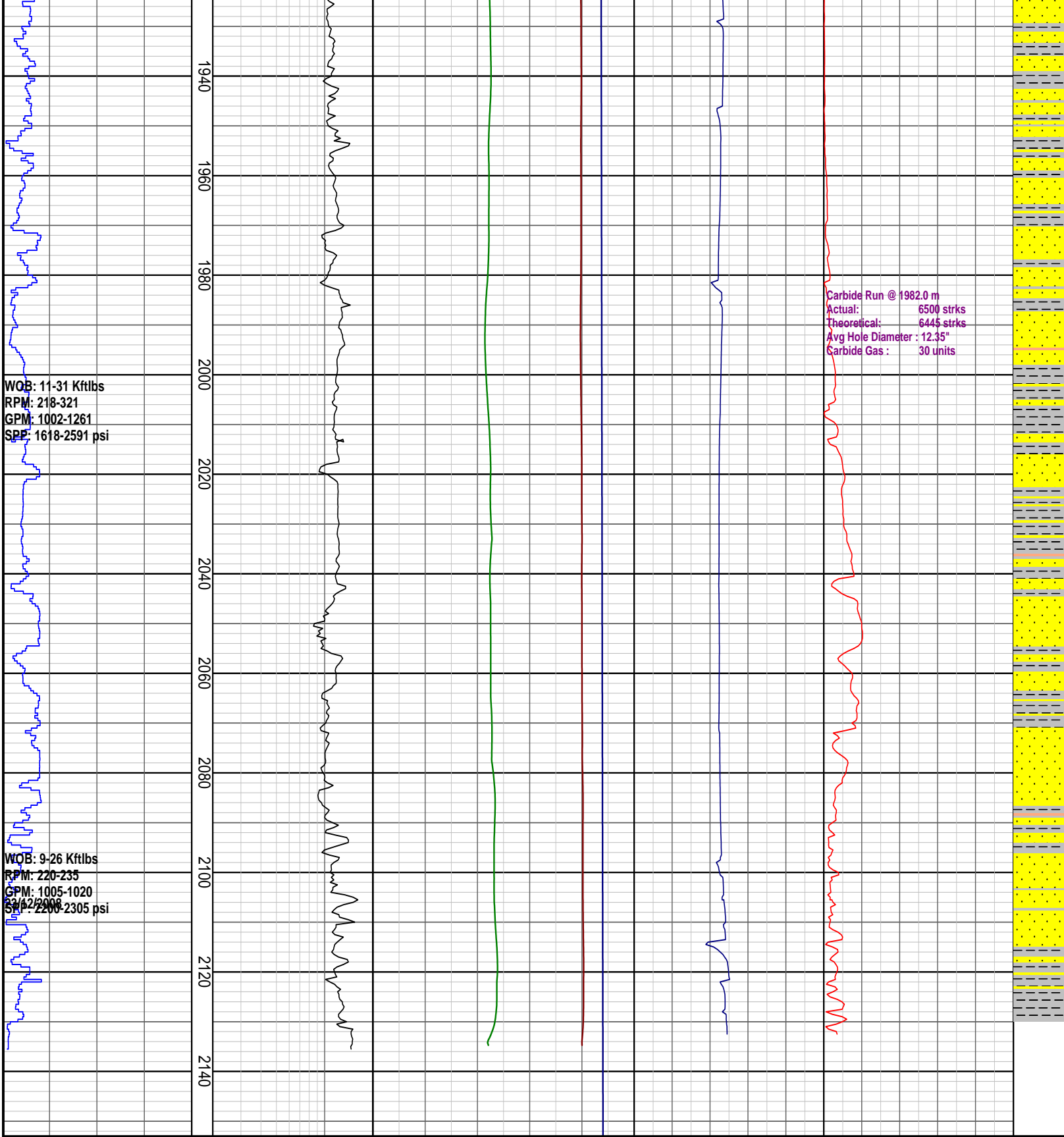
21/12/2008

WOB: 1-18 Kftlbs  
RPM: 98-148  
GPM: 800-925  
SPP: 1470-1950 psi

WOB: 9-26 Kftlbs  
RPM: 117-170  
GPM: 803-1008  
SPP: 1437-2267 psi

Carbide Run @ 1421.0 m  
Actual: 4825 strks  
Theoretical: 4811 strks  
Avg Hole Diameter : 12.29"  
Carbide Gas : 18 units





**PRESSURE DATA PLOT**

Rate of Penetration ROP	DRILLING EXPONENT DXC	PRESSURE DATA Pore Pressure	TEMPERATURE Temperature Out	GAS Total Gas	INTERPRETED LITHOLOGY
50   100   150   200 m/hr	0.2   2	4   8   12   16   20 ppg	20   40   60   80   100 degC	10   20   30   40   50 unit	
		4   8   12   16   20 ppg			
		4   8   12   16   20 ppg			

